

Gateways & Energy Servers

Partner Business → Power Solutions → GES
James Jeanette

Gateways

Energy Servers



EGX100



EGX300



COM'X 200

EGX300 Demo
Current Version 4.370

Schneider
Electric

- ✓ Easy to install. Easy to configure. Easy to Troubleshoot.
- ✓ All features of EGX100 + Data Logging + Real Time Data + Integrated Web Server.
- ✓ Embedded Entry-Level Power Monitoring Software and Dashboards. **Nothing to install.**

The EGX300 offers you a “window” into your power equipment.



“entry level Energy Management ...in a box”

The **EGX300** is an **integrated gateway-server** that requires only a web browser and Ethernet network to log and display real-time data and trend plots from up to 64 PowerLogic system devices, including other gateway devices on the same network.

Current Version: **Firmware Version 4.370 Disk Update 4.370**



Supported Device Types

The screenshot shows a software interface with several panels:

- Documentation:** A list of device types including PM5000, PM6-modbus, PM6-plogic, PM700, PM800, PM9c, PowerLogic, PowerPact A, PowerPact E, Sepam 2000, Sepam Series 10, Sepam Series 20, Sepam Series 40, Sepam Series 80, SIM10M, SIM10Z, SIM6BZ, TeSys T, and Twido-WAGES D12.
- Control:** A section for device control.
- Connection:** A table with columns for IP address (e.g., 157.198.184.86) and Serial Port (e.g., Modbus).
- Diagnostics:** A section for device diagnostics.
- Device List:** A table with a 'Viewable Devices' dropdown set to 16 and a 'Device Name' column containing entries like Randis PM800, PM5000, PM200, PM5000, and JNet.

Buttons for 'Discover' and 'Apply' are visible at the bottom of the interface.

4-noks ZED-THL-M
 Accusine
 Acti 9 Smartlink
 ATS48
 ATV61
 ATV71
 BCM100A
 BCM50A
 BCPM-Model A
 BCPM-Model B
 BCPM-Model C
 CM100/200
 CM2000
 CM3000
 CM4000
 Compact NSX-A
 Compact NSX-E
 Conext TL
 DM6000
 DM6300
 E5600
 EM1200
 EM1210/1250/1251
 EM26-96
 EM3550
 EM3555
 EM4800 08-Circuit
 EM4800 12-Circuit
 EM4800 24-Circuit
 EM6400
 EM6433
 EM6436
 EM6436D
 EM6438

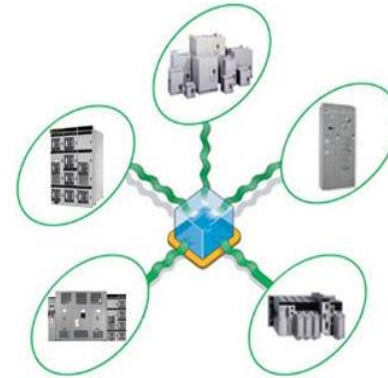
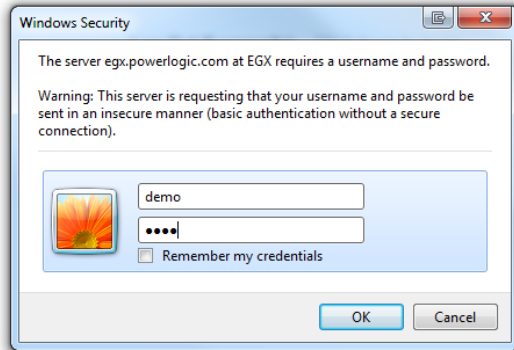
EM7230/EM7280
 Enercept
 Energy Meter
 iEM3150
 iEM3155
 iEM3250
 iEM3255
 iEM3350
 iEM3355
 ION6200
 ION6200 (mega)
 ION7300
 ION7500
 ION7550
 ION7600
 ION7650
 ION8600
 MCM
 Micrologic A
 Micrologic A + CCM
 Micrologic E
 Micrologic E + CCM
 Micrologic H
 Micrologic H + CCM
 Micrologic P
 Micrologic P + CCM
 Model98-modbus
 Model98-plogic
 MotorLogic Plus
 MotorLogic Plus II
 MVSS/RVSS
 PM1000
 PM200
 PM300

PM3250/PM3255
 PM500
 PM5100/PM5300
 PM5350
 PM5350xB
 PM5560
 PM6-modbus
 PM6-plogic
 PM700
 PM800
 PM800 A-S1/A-S2
 PM9c
 PowerPact A
 PowerPact E
 Sepam 2000
 Sepam Series 10
 Sepam Series 20
 Sepam Series 40
 Sepam Series 80
 SIM10M
 SIM10Z
 SIM6BZ
 TeSys T
 Twido BK
 Twido-wages
 Twido-WAGES D12
 Twido-WAGES D28
 Twido-WAGES D44
 Var Logic
 Vigilohm IM20
 Vigilohm IM20-H
 Vigilohm IM400



PowerLogic™ EGX300

Home	Documentation			Logout
Monitoring	Control	Diagnostics	Maintenance	Setup



Available Demo

<http://egx.powerlogic.com>

User name | **demo**

Password | **demo**

Alternate Languages

- German - demoDE | demoDE
- Spanish – demoES | demoES
- French – demoFR | demoFR
- Chinese – demoCN | demoCN
- Italian – demoIT | demoIT
- Japanese – demoJA | demoJA
- Russian – demoRU | demoRU